



One Network
Enterprises™

One Network Logistics Control Tower

Supplier User Guide: Shipment Search

Date: June 27, 2024

Version: 1.0

Table of Contents

- INTRODUCTION2**
- SHIPMENT SEARCH.....3**
 - SHIPMENT OVERVIEW.....3
 - Context*.....3
 - Process Flow*.....3
 - System Steps*3

Version Control

Version	Who	Notes
24-0627	NB	Updated standard formatting
24-0710	AH	Updated versioning and formatting

About One Network Enterprises

One Network Enterprises (ONE) is the leader in supply chain autonomous planning, control towers, and provider of the Digital Supply Chain Network™. It is the only solution that gives supply chain managers and executives end-to-end visibility and control with one data model and one truth, from raw material to last mile delivery. Powered by NEO, One Network’s machine learning and intelligent agent technology, it enables seamless planning and execution, across inbound supply, outbound order fulfillment, and logistics, matching demand with available supply in real-time. Lead your industry by providing the highest service levels and product quality at the lowest possible cost.

www.onenetwork.com

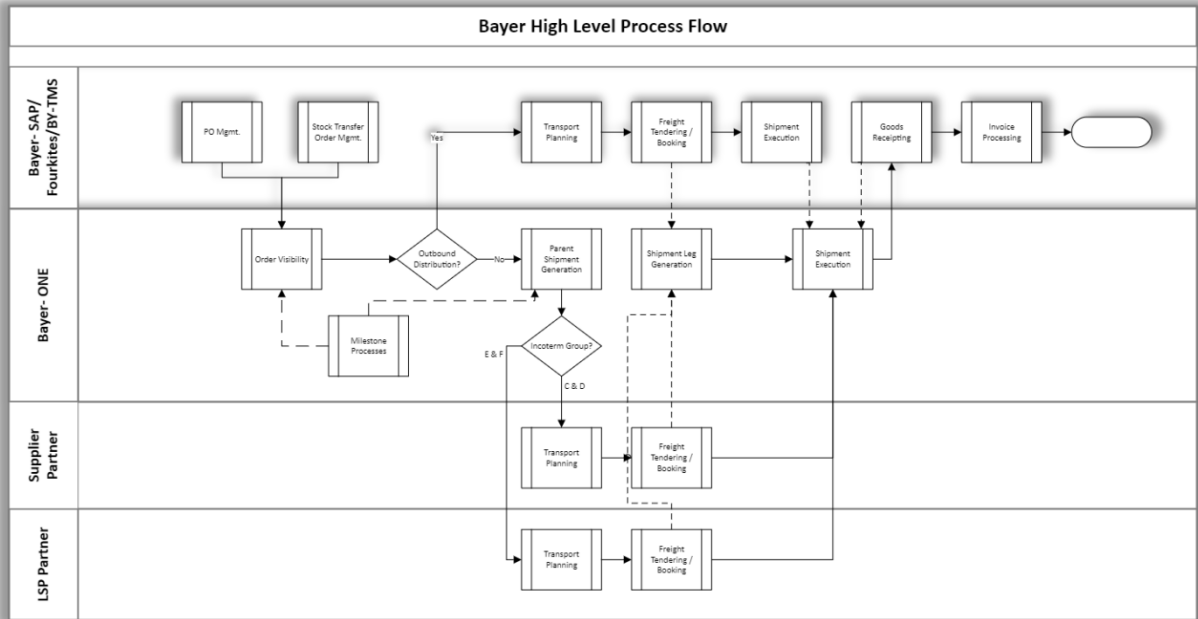
Introduction

The Bayer Crop Science Logistics control tower solution is a part of their inbound and outbound Supply Chain operations, Visibility & Data Program that aims at enabling a connected core of internal and external data for Global Operations in partnership with One Network. The solution will digitalize the segregated process of using different tools, software and provide end-to-end order and shipment visibility to all the stakeholders of the transactions.

The process would start from finding an eligible order, creating a parent point to point shipment against the order, getting the shipment booking with the LSPs/Suppliers freight forwarders and finally generating the shipment legs and storing the container details against the shipments (if applicable).

Shipment tracking information will be retrieved from multiple sources, including those of Suppliers and In-Country LSPs to ensure visibility across all shipment legs; with the existing FourKites integrations being linked through to ONE for a true single version of the truth across all operational phases. The events will be used to generate ETAs (Estimated Time of Arrival) for deliveries based on the information provided by the source of data.

Additionally, ONE would also provide Alerting, Reporting, Milestones, Problem management and Dashboard capabilities that would give users actionable information and insights.



Shipment Search

Shipment Overview

Context

Activity Purpose	This activity enables system users (Suppliers) to search shipment
Activity Initiators	
Activity Prerequisites	
Activity Performer(s)	Vendor Users
Other Parties Involved	
Additional Information	
Activity Outcome	Shipment details will be displayed

Process Flow

N/A

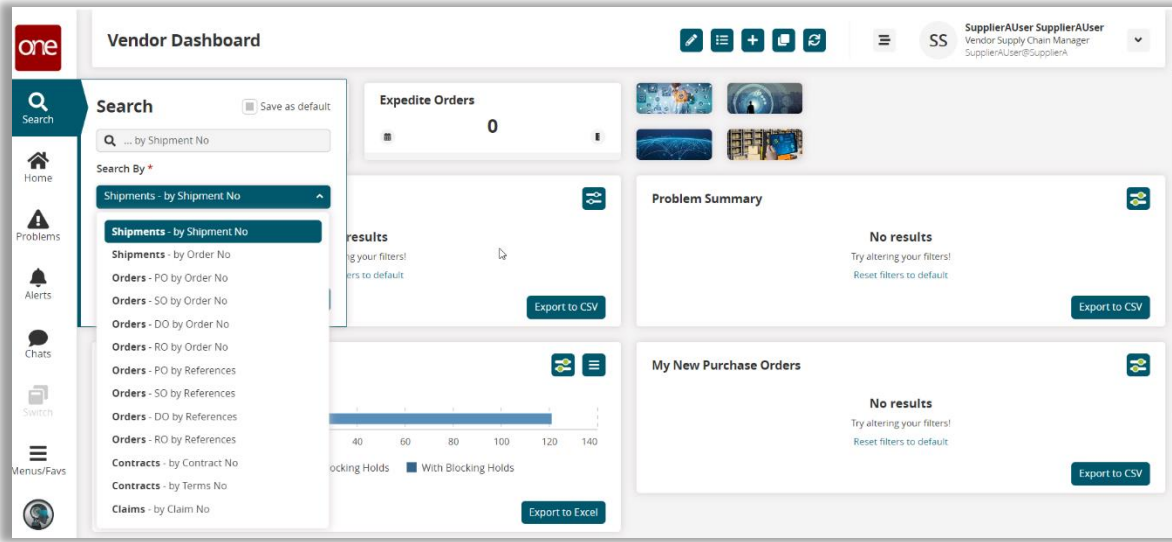
System Steps

Global Search using NEO UI

The global search option on NEO UI provides the user the ability to search the shipment directly by variety of search keys for shipments.

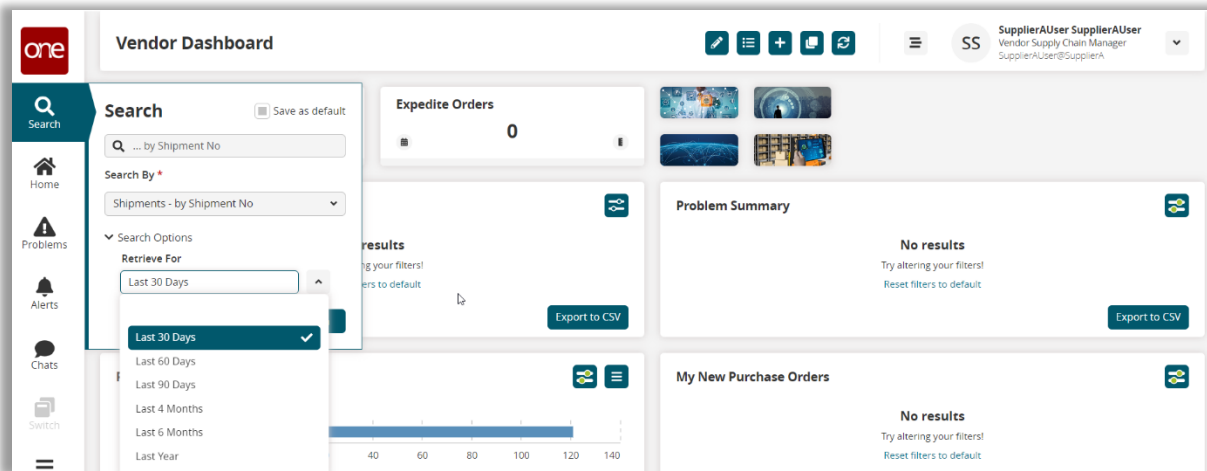
Note – in the NEO UI, the main menu is located on the left side bar Navigational panel.

1. Login to the One Network system and use the NEO UI.

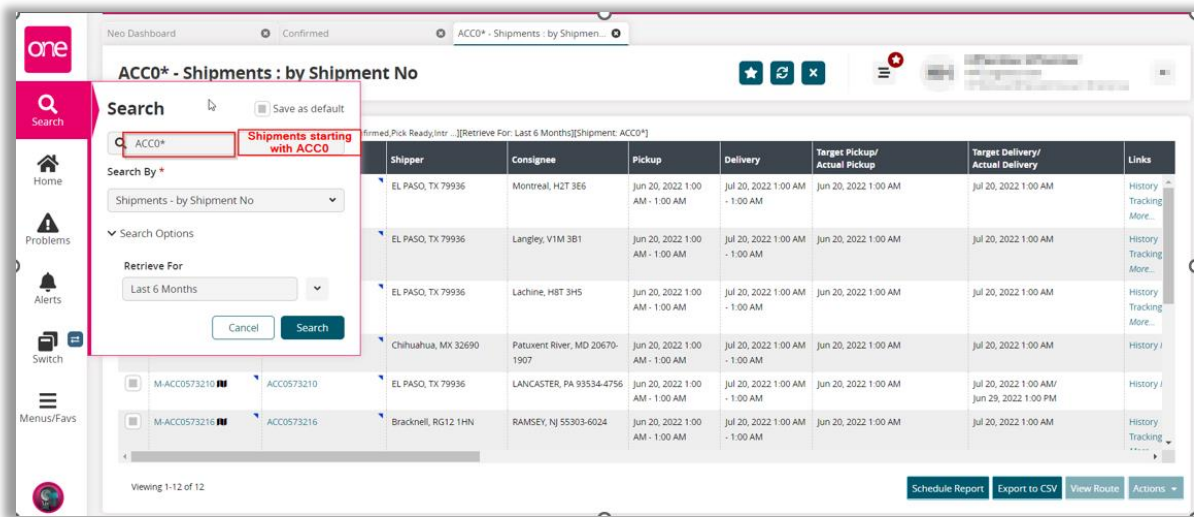


2. When you select the **Search** icon, a **Search** slide out appears for you to enter your search criteria.

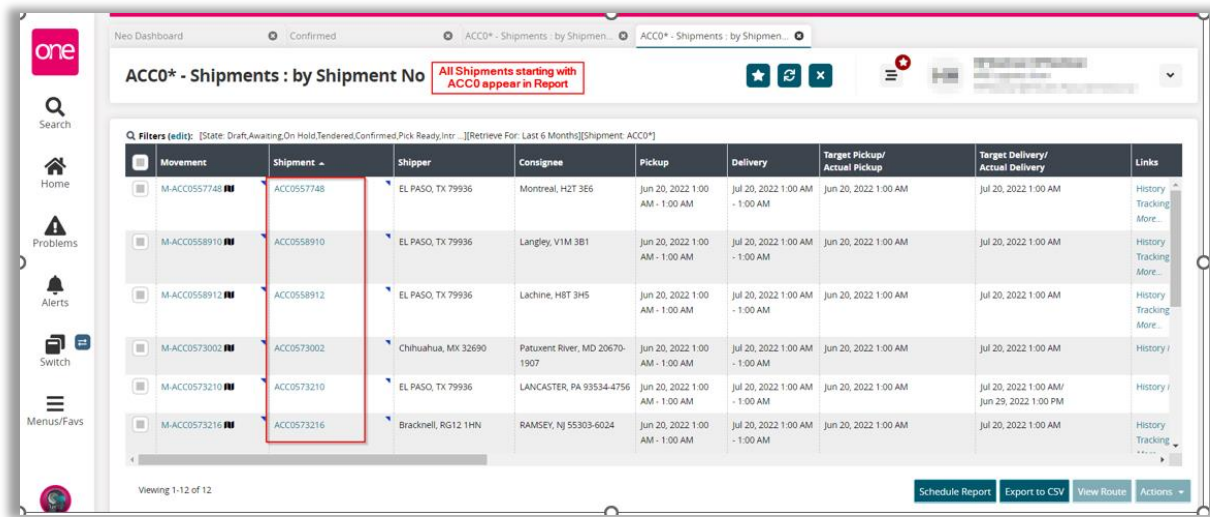
In the Search By field, please choose the correct drop-down choice such as “Shipments - by Shipment No” or “Shipments - by Movement No”.



3. Click the **Search Options** link to see the **Retrieve For** field. The default choice is “Last 30 Days” – if you want to look for Shipments or Movements whose Pickup Date is older than 30 days, select one of the other choices from the drop-down list.
4. Enter your search value (i.e., Shipment Number or Movement Number) in the **Search** field and then press the **Search** button on the **Search** slide out or press the **Enter** key on your keyboard.
5. **IMPORTANT** – When entering your search value in the **Search** field, you can enter a wild card symbol if you do not know or do not want to enter the entire value. The wild card is the asterisk (*) symbol, and you can enter it either before or enter it after the value.



6. The **Movement/Shipment Summary** screen meeting the entered search criteria will appear.

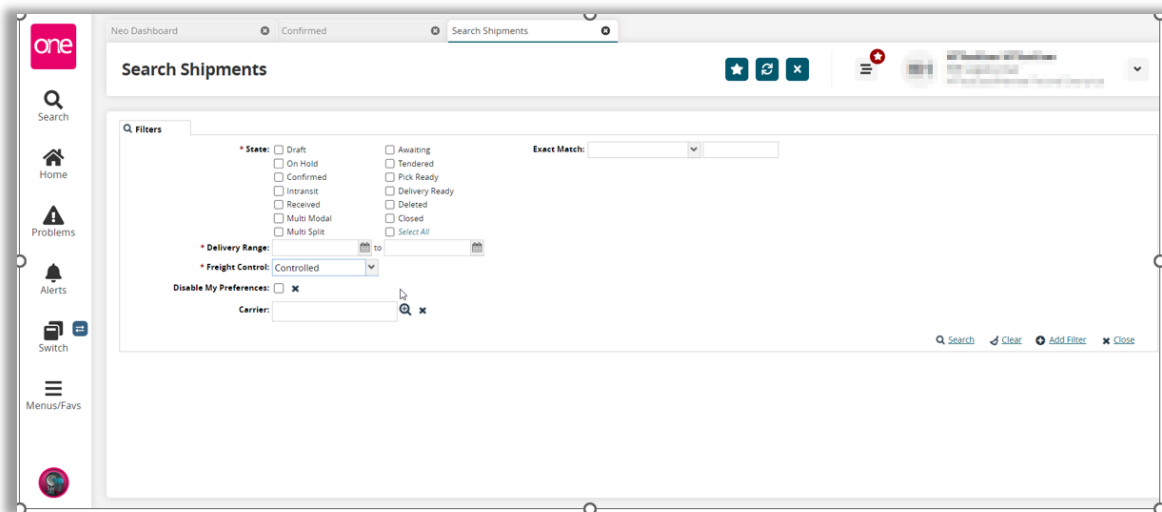
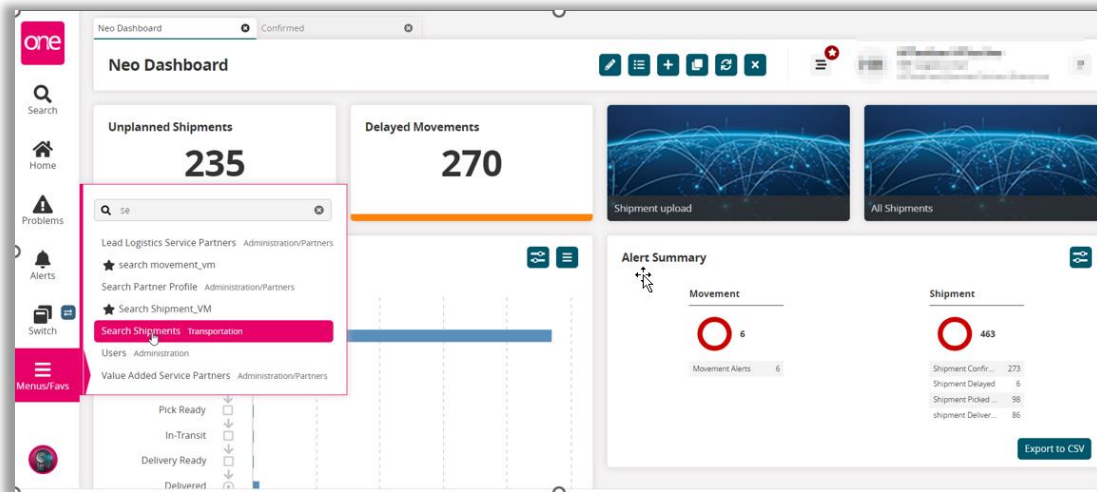


Using “Search Shipment” Option

The Search Shipments option allows you to search for shipments using various filters. After, you can view a Shipment State report for all shipments in a state, view details of shipments and movements, apply actions, display shipments and movements in a geographical view, or export the search results to a spreadsheet.

Complete the following steps to search shipments:

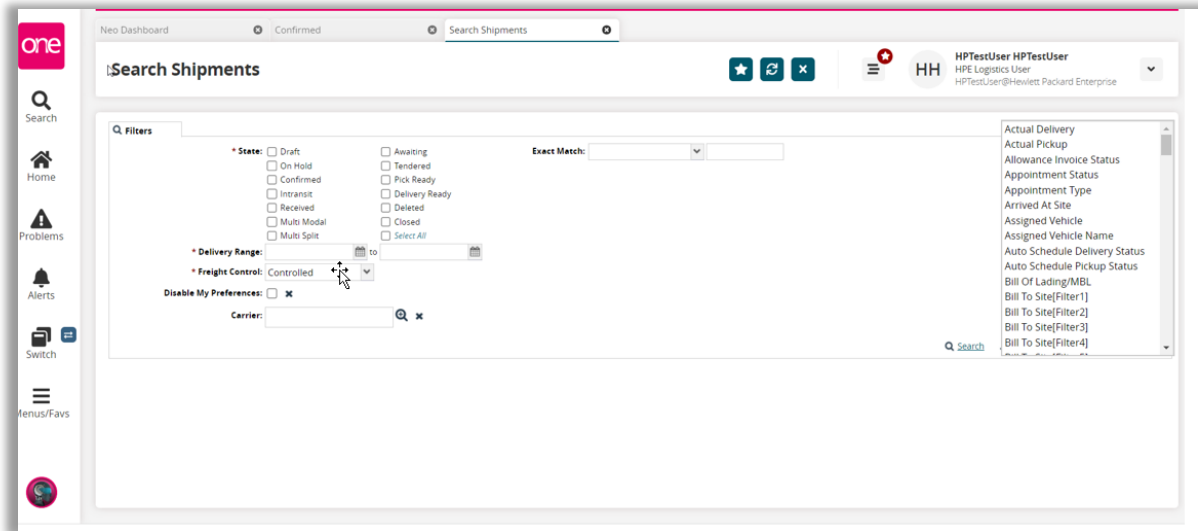
1. Log in to the ONE system.
2. Click **Menus/Favs > Transportation > Search Shipments**.
In the NEO UI, users can click on the Menu/Favs icon on the left sidebar and type in the name of the screen in the menu search bar. The Search Shipments filters screen appears.



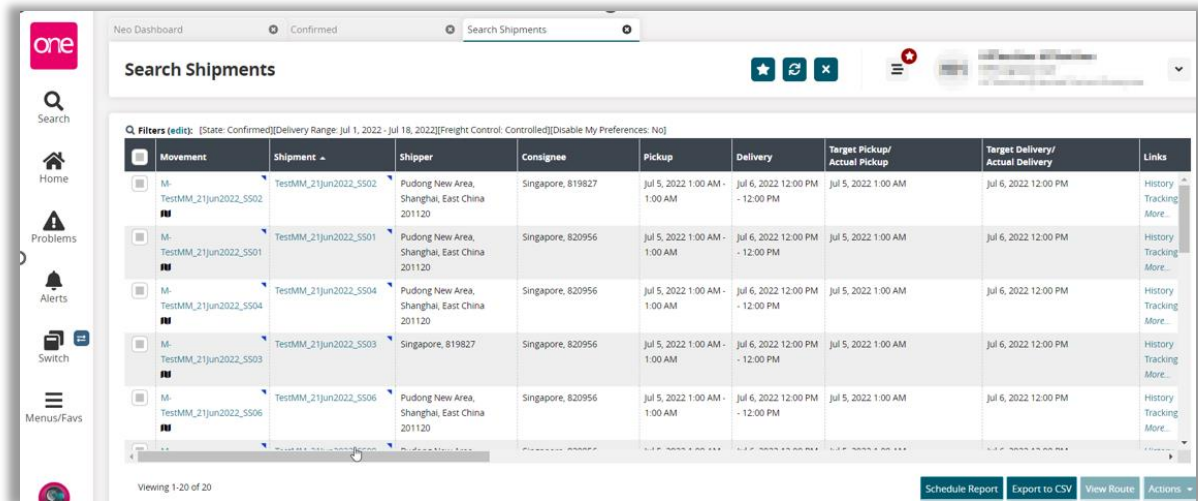
3. Fill out the following fields. Fields with an asterisk (*) are required.

Field	Description
*State	Select one or more state checkboxes for the shipments. These checkboxes correspond to the different states of a shipment in the system.
*Delivery Range	Select a date range on which the shipments are delivered.
*Freight Control	Select an option from the dropdown menu.
Exact Match	Select an option from the dropdown menu.

- To add more search filters, click the **Add Filter** link, and then click one or more filter options from the **Add Filter** list.



- Fill out the filters as desired and click the Search link.

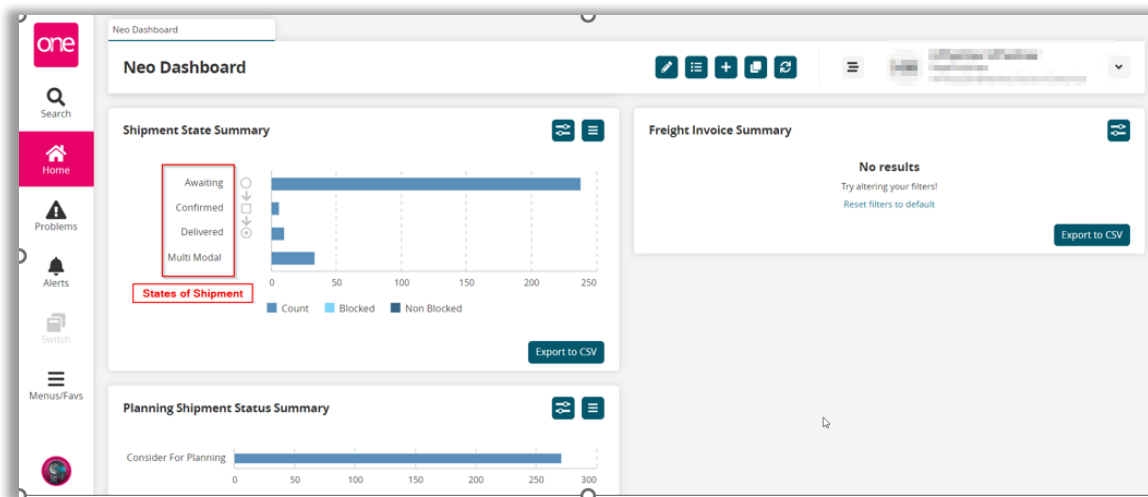


- Click the **Export to CSV** button to export the report to a CSV file.
- In the **Movement** or **Shipment** column, click the triangle button in the corner to open context menu.
- User can click on any Shipment Legs to get details of that particular shipment .

Shipment summary Report / Shipment widgets

The user can navigate to the ONE dashboard and to the shipment state summary widget. All Shipments can be viewable on the Shipment State Summary page per 'State'. The feature allowing the user to click any given 'state' where the shipments in the corresponding 'state' will be displayed.

NEO Dashboard with Shipment State Summary widget displaying the shipments in their 'State'.



The Shipment shows combination of state and status. For instance, if a user clicks on Confirmed shipments, user can see the status of the Shipment in Confirmed/Delivered State. This allows user to have extra visibility on the execution status of the shipment.

Sample Confirmed 'State' screen.

The screenshot shows the 'Confirmed' shipment screen. The screen displays a table with columns: Movement, Shipment, Flags, Shipper, Consignee, Bill To Site, Pickup, Delivery, Links, and State/Status. The table shows several rows of shipment data. The first row shows a shipment with movement 'M-ACCO573002', shipment 'ACCO573002', flags '1', shipper 'Chihuahua, MX 32690', consignee 'Patuxent River, MD 20670-1907', bill to site, pickup 'Jun 20, 2022 1:00 AM - 1:00 AM', delivery 'Jul 20, 2022 1:00 AM - 1:00 AM', links, and state/status 'Confirmed/ Accepted'. The second row shows a shipment with movement 'M-TEST AMT-1234', shipment 'TEST AMT-1234', flags, shipper 'HOUSTON, TX 77869', consignee 'Rooseville, CA 98756', bill to site, pickup 'Jul 12, 2022 2:15 PM - Jul 13, 2022 2:15 PM', delivery 'Jul 20, 2022 2:15 PM - Jul 21, 2022 2:15 PM', links, and state/status 'Confirmed/ Accepted'. The third row shows a shipment with movement 'M-105_SHP_1', shipment '105_SHP_1', flags '06', shipper 'AE 54321', consignee 'rr, VA 43215', bill to site, pickup 'Jul 20, 2022 2:52 AM - Jul 21, 2022 2:52 AM', delivery 'Jul 25, 2022 2:52 AM - Jul 26, 2022 2:52 AM', links, and state/status 'Confirmed/ Accepted'. The fourth row shows a shipment with movement 'M-HPEN-115_1', shipment 'HPEN-115_1', flags, shipper '06 AE 54321', consignee 'rr, VA 43215', bill to site, pickup 'Jul 20, 2022 2:52 AM - Jul 21, 2022 2:52 AM', delivery 'Jul 25, 2022 2:52 AM - Jul 26, 2022 2:52 AM', links, and state/status 'Confirmed/ Accepted'. The fifth row shows a shipment with movement 'M-ONE-1180-LEG1', shipment 'ONE-1180-LEG1', flags, shipper 'Katy, AR 77494', consignee 'Houston, AL 77058', bill to site, pickup 'Jul 18, 2022 4:29 PM - Jul 19, 2022 4:29 PM', delivery 'Jul 25, 2022 4:29 PM - Jul 26, 2022 4:29 PM', links, and state/status 'Confirmed/ Accepted'. The sixth row shows a shipment with movement 'M-AMT- M-ATI-TEST', shipment 'AMT- M-ATI-TEST-LEG2', flags, shipper 'rooseville, CA 98764', consignee 'Houston, TX 77560', bill to site, pickup 'Jul 19, 2022 2:38 PM', delivery 'Jul 26, 2022 2:38 PM', links, and state/status 'Confirmed/ Accepted'. At the bottom of the table, there are buttons for 'Schedule Report', 'Export to CSV', 'View Route', and 'Actions'. The text 'Viewing 1 of 6' is visible at the bottom left of the table.